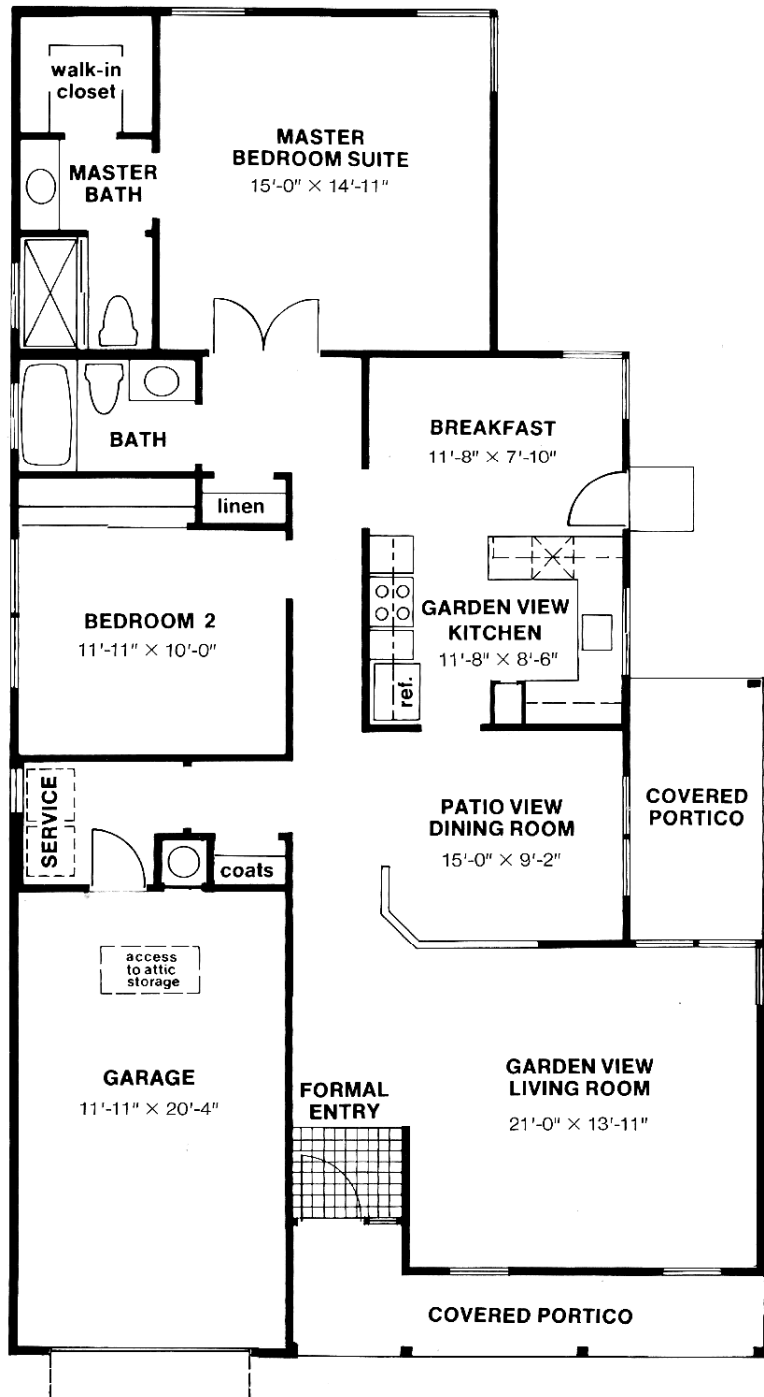


# The Westport

## Plan 0315

- 2 bedrooms, 2 baths
- Dramatic formal entry
- Covered entry portico
- Spacious garden view kitchen
- Separate breakfast room
- Formal patio view dining room
- Elegant garden view living room
- Dramatic master bedroom suite
- Huge walk-in closet
- Compartmented private master bath suite with dressing area
- Conveniently located service room
- Attic storage with folding steps
- Interior garage access door



Options for this plan are available at additional cost and must be ordered from Leisure Fair prior to construction and at time of Contract of Purchase. See The Options page for availability.

All floorplan dimensions are approximate. Details and features are subject to change without notice.

This advertisement is not an offer of an interest in the Leisure Knoll Association, which may be made only by formal prospectus. H79-022.